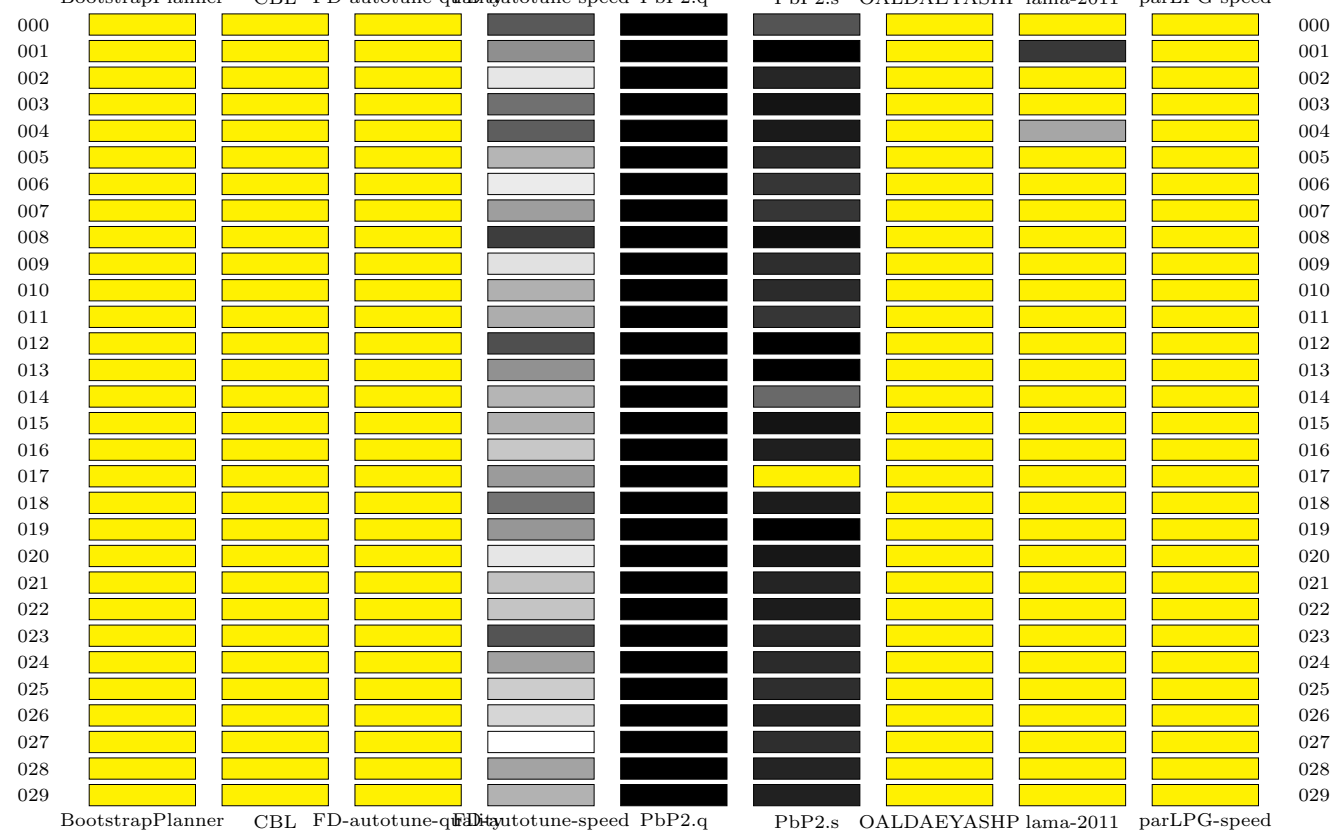


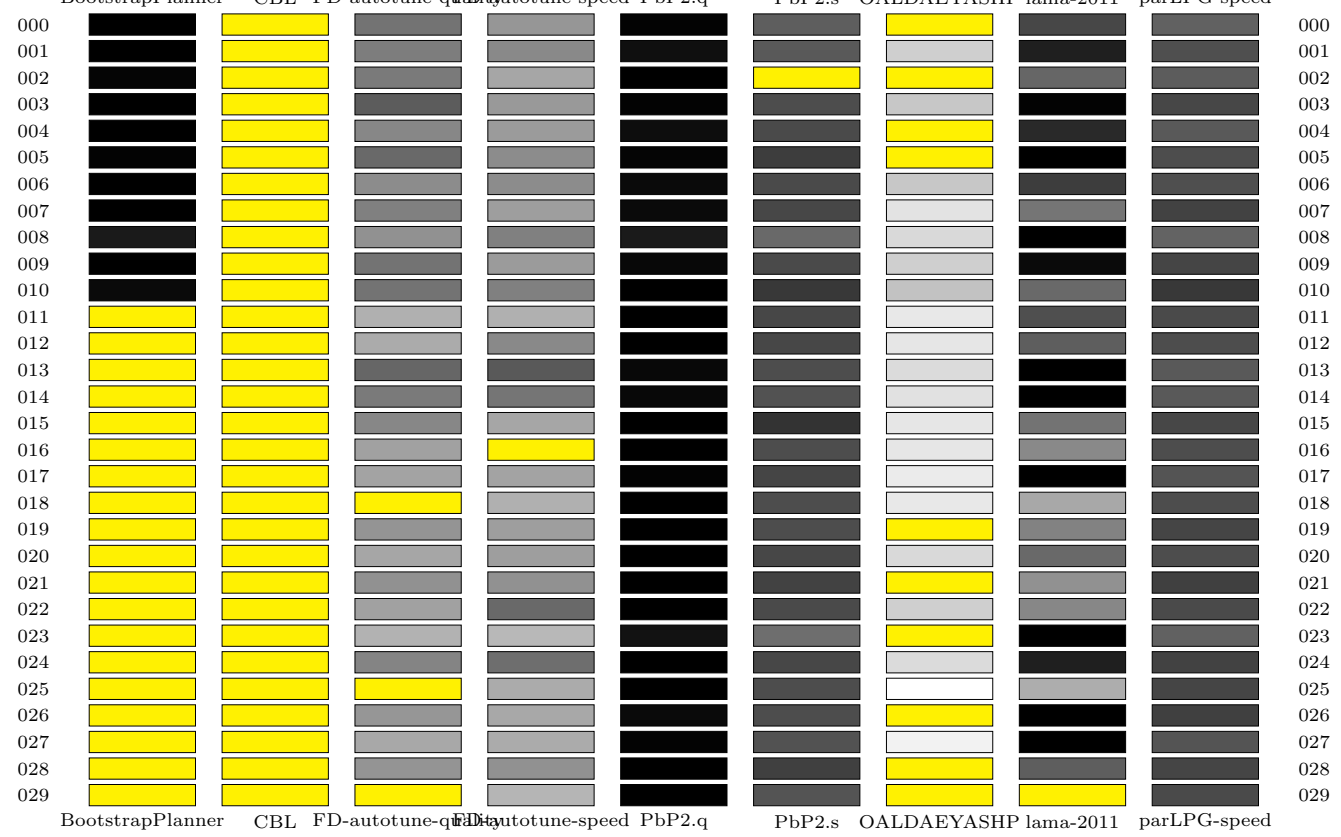
Quality with DSK

no.	BootstrapPlanner	CBL	FD-autotune-quality	FD-autotune-speed	PbP2.q	PbP2.s	OALDAEYASHP	lama-2011	parLPG-speed	best
000	∅	∅	∅	0.94	1.00	0.95	∅	∅	∅	358.00
001	∅	∅	∅	0.91	1.00	1.00	∅	0.96	∅	378.00
002	∅	∅	∅	0.86	1.00	0.98	∅	∅	∅	369.00
003	∅	∅	∅	0.93	1.00	0.99	∅	∅	∅	373.00
004	∅	∅	∅	0.94	1.00	0.98	∅	0.90	∅	372.00
005	∅	∅	∅	0.89	1.00	0.97	∅	∅	∅	399.00
006	∅	∅	∅	0.85	1.00	0.97	∅	∅	∅	396.00
007	∅	∅	∅	0.90	1.00	0.97	∅	∅	∅	396.00
008	∅	∅	∅	0.96	1.00	0.99	∅	∅	∅	407.00
009	∅	∅	∅	0.86	1.00	0.97	∅	∅	∅	398.00
010	∅	∅	∅	0.89	1.00	0.97	∅	∅	∅	430.00
011	∅	∅	∅	0.89	1.00	0.97	∅	∅	∅	427.00
012	∅	∅	∅	0.95	1.00	1.00	∅	∅	∅	442.00
013	∅	∅	∅	0.91	1.00	1.00	∅	∅	∅	442.00
014	∅	∅	∅	0.89	1.00	0.93	∅	∅	∅	413.00
015	∅	∅	∅	0.89	1.00	0.99	∅	∅	∅	468.00
016	∅	∅	∅	0.88	1.00	0.98	∅	∅	∅	465.00
017	∅	∅	∅	0.90	1.00	∅	∅	∅	∅	456.00
018	∅	∅	∅	0.93	1.00	0.98	∅	∅	∅	466.00
019	∅	∅	∅	0.91	1.00	1.00	∅	∅	∅	474.00
020	∅	∅	∅	0.86	1.00	0.99	∅	∅	∅	499.00
021	∅	∅	∅	0.88	1.00	0.98	∅	∅	∅	495.00
022	∅	∅	∅	0.88	1.00	0.98	∅	∅	∅	497.00
023	∅	∅	∅	0.95	1.00	0.98	∅	∅	∅	494.00
024	∅	∅	∅	0.90	1.00	0.97	∅	∅	∅	492.00
025	∅	∅	∅	0.87	1.00	0.97	∅	∅	∅	523.00
026	∅	∅	∅	0.87	1.00	0.98	∅	∅	∅	526.00
027	∅	∅	∅	0.84	1.00	0.97	∅	∅	∅	523.00
028	∅	∅	∅	0.90	1.00	0.98	∅	∅	∅	526.00
029	∅	∅	∅	0.89	1.00	0.98	∅	∅	∅	527.00
total	0.00	0.00	0.00	26.91	30.00	28.36	0.00	1.86	0.00	



Quality with DSK

no.	BootstrapPlanner	CBL	FD-autotune-quality	FD-autotune-speed	PbP2.q	PbP2.s	OALDAEYASHP	lama-2011	parLPG-speed	best
000	1.00	∅	0.58	0.44	0.99	0.65	∅	0.73	0.64	176.00
001	1.00	∅	0.54	0.50	0.94	0.68	0.24	0.89	0.71	162.00
002	0.98	∅	0.55	0.39	1.00	∅	∅	0.63	0.66	184.00
003	1.00	∅	0.66	0.44	0.99	0.72	0.27	0.99	0.74	166.00
004	1.00	∅	0.50	0.43	0.95	0.72	∅	0.85	0.67	158.00
005	0.99	∅	0.62	0.48	0.98	0.77	∅	1.00	0.72	208.00
006	1.00	∅	0.48	0.49	0.96	0.73	0.27	0.78	0.71	196.00
007	1.00	∅	0.53	0.42	0.96	0.74	0.17	0.56	0.76	202.00
008	0.90	∅	0.46	0.53	0.90	0.62	0.20	1.00	0.63	184.00
009	1.00	∅	0.58	0.43	0.97	0.73	0.24	0.96	0.75	198.00
010	0.96	∅	0.58	0.53	1.00	0.80	0.29	0.61	0.79	242.00
011	∅	∅	0.36	0.36	1.00	0.74	0.15	0.71	0.73	254.00
012	∅	∅	0.38	0.50	1.00	0.74	0.15	0.65	0.72	252.00
013	∅	∅	0.62	0.67	0.98	0.72	0.20	1.00	0.68	238.00
014	∅	∅	0.55	0.57	0.98	0.70	0.18	1.00	0.67	248.00
015	∅	∅	0.51	0.39	1.00	0.82	0.15	0.57	0.74	284.00
016	∅	∅	0.41	∅	1.00	0.71	0.15	0.49	0.72	300.00
017	∅	∅	0.40	0.40	0.99	0.75	0.14	1.00	0.69	294.00
018	∅	∅	∅	0.35	1.00	0.72	0.15	0.38	0.72	286.00
019	∅	∅	0.46	0.42	1.00	0.72	∅	0.52	0.75	288.00
020	∅	∅	0.39	0.42	1.00	0.73	0.20	0.62	0.72	326.00
021	∅	∅	0.47	0.46	1.00	0.76	∅	0.47	0.77	328.00
022	∅	∅	0.41	0.62	1.00	0.73	0.24	0.50	0.73	320.00
023	∅	∅	0.35	0.33	0.94	0.60	∅	1.00	0.65	320.00
024	∅	∅	0.51	0.60	1.00	0.74	0.19	0.88	0.76	322.00
025	∅	∅	∅	0.38	1.00	0.72	0.06	0.36	0.74	378.00
026	∅	∅	0.45	0.38	0.96	0.72	∅	1.00	0.76	380.00
027	∅	∅	0.38	0.37	0.99	0.70	0.11	1.00	0.69	358.00
028	∅	∅	0.45	0.47	1.00	0.77	∅	0.66	0.75	374.00
029	∅	∅	∅	0.34	1.00	0.69	∅	∅	0.73	388.00
total	10.83	0.00	13.16	13.09	29.47	20.91	3.75	21.83	21.50	



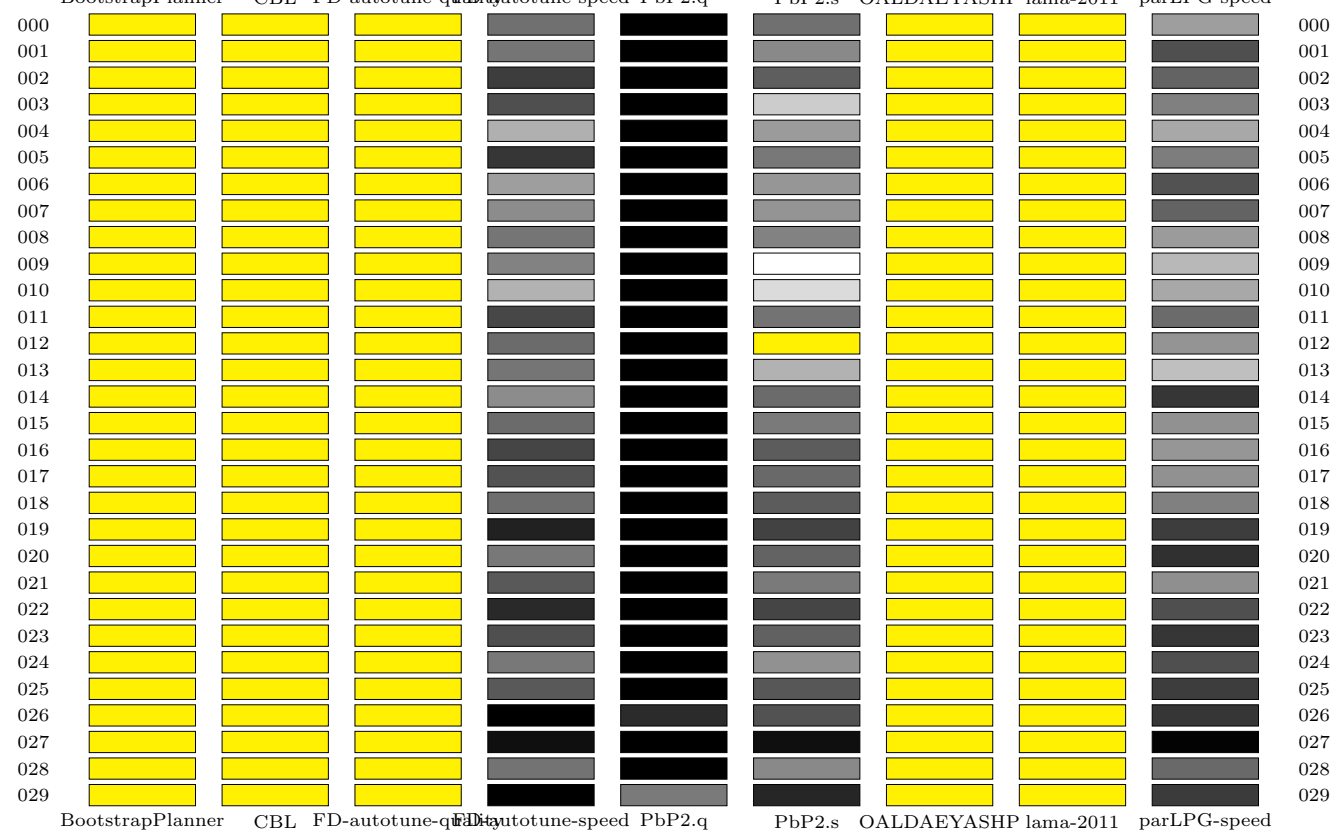
Quality with DSK

no.	BootstrapPlanner	CBL	FD-autotune-quality	FD-autotune-speed	PbP2.q	PbP2.s	OALDAEYASHP	lama-2011	parLPG-speed	best
000	∅	∅	∅	∅	∅	∅	∅	∅	∅	∅
001	∅	∅	∅	∅	✘	∅	∅	∅	∅	∅
002	∅	∅	∅	1.00	∅	∅	∅	∅	∅	105.00
003	∅	∅	∅	1.00	∅	0.40	∅	∅	0.48	106.00
004	∅	∅	∅	∅	∅	∅	∅	∅	∅	∅
005	∅	∅	∅	∅	1.00	0.41	∅	∅	0.35	101.00
006	∅	∅	∅	∅	1.00	0.40	∅	∅	0.50	147.00
007	∅	∅	∅	1.00	0.90	0.24	∅	∅	0.52	103.00
008	∅	∅	∅	1.00	0.86	0.63	∅	∅	0.29	102.00
009	∅	∅	∅	∅	✘	1.00	∅	∅	∅	333.00
010	∅	∅	∅	1.00	∅	∅	∅	∅	0.35	121.00
011	∅	∅	∅	1.00	0.78	0.42	∅	∅	0.41	122.00
012	∅	∅	∅	1.00	∅	0.37	∅	∅	∅	121.00
013	∅	∅	∅	1.00	∅	∅	∅	∅	∅	122.00
014	∅	∅	∅	∅	∅	∅	∅	∅	∅	∅
015	∅	∅	∅	1.00	∅	0.63	∅	∅	0.32	131.00
016	∅	∅	∅	1.00	∅	0.42	∅	∅	0.47	136.00
017	∅	∅	∅	1.00	∅	0.43	∅	∅	0.40	121.00
018	∅	∅	∅	1.00	∅	0.33	∅	∅	∅	126.00
019	∅	∅	∅	1.00	0.92	0.58	∅	∅	0.57	131.00
020	∅	∅	∅	1.00	0.70	0.80	∅	∅	0.64	127.00
021	∅	∅	∅	∅	∅	∅	∅	∅	∅	∅
022	∅	∅	∅	1.00	0.94	0.58	∅	∅	0.78	133.00
023	∅	∅	∅	1.00	∅	∅	∅	∅	∅	137.00
024	∅	∅	∅	1.00	∅	0.73	∅	∅	∅	143.00
025	∅	∅	∅	∅	∅	1.00	∅	∅	0.83	242.00
026	∅	∅	∅	1.00	∅	0.42	∅	∅	∅	154.00
027	∅	∅	∅	1.00	0.91	0.74	∅	∅	0.53	142.00
028	∅	∅	∅	1.00	∅	0.46	∅	∅	0.39	148.00
029	∅	∅	∅	∅	1.00	0.54	∅	∅	0.50	169.00
total	0.00	0.00	0.00	20.00	9.01	11.53	0.00	0.00	8.31	

	BootstrapPlanner	CBL	FD-autotune-q	FD-autotune-speed	PbP2.q	PbP2.s	OALDAEYASHP	lama-2011	parLPG-speed	
000	Yellow	Yellow	Yellow	Yellow	Yellow	Yellow	Yellow	Yellow	Yellow	000
001	Yellow	Yellow	Yellow	Yellow	Red	Yellow	Yellow	Yellow	Yellow	001
002	Yellow	Yellow	Yellow	Black	Yellow	Yellow	Yellow	Yellow	Yellow	002
003	Yellow	Yellow	Yellow	Black	Yellow	Light Gray	Yellow	Yellow	Light Gray	003
004	Yellow	Yellow	Yellow	Yellow	Yellow	Yellow	Yellow	Yellow	Yellow	004
005	Yellow	Yellow	Yellow	Yellow	Black	Light Gray	Yellow	Yellow	Light Gray	005
006	Yellow	Yellow	Yellow	Yellow	Black	Light Gray	Yellow	Yellow	Dark Gray	006
007	Yellow	Yellow	Yellow	Black	Black	White	Yellow	Yellow	Dark Gray	007
008	Yellow	Yellow	Yellow	Black	Black	Dark Gray	Yellow	Yellow	Light Gray	008
009	Yellow	Yellow	Yellow	Yellow	Red	Black	Yellow	Yellow	Yellow	009
010	Yellow	Yellow	Yellow	Black	Yellow	Yellow	Yellow	Yellow	Light Gray	010
011	Yellow	Yellow	Yellow	Black	Dark Gray	Light Gray	Yellow	Yellow	Light Gray	011
012	Yellow	Yellow	Yellow	Black	Yellow	Light Gray	Yellow	Yellow	Yellow	012
013	Yellow	Yellow	Yellow	Black	Yellow	Yellow	Yellow	Yellow	Yellow	013
014	Yellow	Yellow	Yellow	Yellow	Yellow	Yellow	Yellow	Yellow	Yellow	014
015	Yellow	Yellow	Yellow	Black	Yellow	Dark Gray	Yellow	Yellow	Light Gray	015
016	Yellow	Yellow	Yellow	Black	Yellow	Light Gray	Yellow	Yellow	Dark Gray	016
017	Yellow	Yellow	Yellow	Black	Yellow	Light Gray	Yellow	Yellow	Light Gray	017
018	Yellow	Yellow	Yellow	Black	Yellow	Light Gray	Yellow	Yellow	Yellow	018
019	Yellow	Yellow	Yellow	Black	Dark Gray	Dark Gray	Yellow	Yellow	Dark Gray	019
020	Yellow	Yellow	Yellow	Black	Dark Gray	Dark Gray	Yellow	Yellow	Dark Gray	020
021	Yellow	Yellow	Yellow	Yellow	Yellow	Yellow	Yellow	Yellow	Yellow	021
022	Yellow	Yellow	Yellow	Black	Black	Dark Gray	Yellow	Yellow	Dark Gray	022
023	Yellow	Yellow	Yellow	Black	Yellow	Yellow	Yellow	Yellow	Yellow	023
024	Yellow	Yellow	Yellow	Black	Yellow	Dark Gray	Yellow	Yellow	Yellow	024
025	Yellow	Yellow	Yellow	Yellow	Yellow	Black	Yellow	Yellow	Dark Gray	025
026	Yellow	Yellow	Yellow	Black	Yellow	Light Gray	Yellow	Yellow	Yellow	026
027	Yellow	Yellow	Yellow	Black	Black	Dark Gray	Yellow	Yellow	Dark Gray	027
028	Yellow	Yellow	Yellow	Yellow	Yellow	Light Gray	Yellow	Yellow	Light Gray	028
029	Yellow	Yellow	Yellow	Yellow	Black	Dark Gray	Yellow	Yellow	Dark Gray	029

Quality with DSK

no.	BootstrapPlanner	CBL	FD-autotune-quality	FD-autotune-speed	PbP2.q	PbP2.s	OALDAEYASHP	lama-2011	parLPG-speed	best
000	∅	∅	∅	0.95	1.00	0.95	∅	∅	0.93	497.00
001	∅	∅	∅	0.95	1.00	0.94	∅	∅	0.97	498.00
002	∅	∅	∅	0.97	1.00	0.96	∅	∅	0.96	506.00
003	∅	∅	∅	0.97	1.00	0.91	∅	∅	0.94	507.00
004	∅	∅	∅	0.92	1.00	0.93	∅	∅	0.93	515.00
005	∅	∅	∅	0.98	1.00	0.95	∅	∅	0.95	536.00
006	∅	∅	∅	0.93	1.00	0.93	∅	∅	0.96	540.00
007	∅	∅	∅	0.94	1.00	0.93	∅	∅	0.96	530.00
008	∅	∅	∅	0.95	1.00	0.94	∅	∅	0.93	529.00
009	∅	∅	∅	0.94	1.00	0.89	∅	∅	0.92	515.00
010	∅	∅	∅	0.92	1.00	0.90	∅	∅	0.93	541.00
011	∅	∅	∅	0.97	1.00	0.95	∅	∅	0.95	547.00
012	∅	∅	∅	0.95	1.00	∅	∅	∅	0.94	548.00
013	∅	∅	∅	0.95	1.00	0.92	∅	∅	0.92	532.00
014	∅	∅	∅	0.94	1.00	0.95	∅	∅	0.98	552.00
015	∅	∅	∅	0.95	1.00	0.95	∅	∅	0.94	567.00
016	∅	∅	∅	0.97	1.00	0.96	∅	∅	0.93	546.00
017	∅	∅	∅	0.96	1.00	0.95	∅	∅	0.94	557.00
018	∅	∅	∅	0.95	1.00	0.96	∅	∅	0.94	555.00
019	∅	∅	∅	0.99	1.00	0.97	∅	∅	0.97	603.00
020	∅	∅	∅	0.95	1.00	0.96	∅	∅	0.98	592.00
021	∅	∅	∅	0.96	1.00	0.95	∅	∅	0.94	557.00
022	∅	∅	∅	0.98	1.00	0.97	∅	∅	0.97	619.00
023	∅	∅	∅	0.97	1.00	0.96	∅	∅	0.98	584.00
024	∅	∅	∅	0.95	1.00	0.94	∅	∅	0.96	606.00
025	∅	∅	∅	0.96	1.00	0.96	∅	∅	0.97	615.00
026	∅	∅	∅	1.00	0.98	0.96	∅	∅	0.98	621.00
027	∅	∅	∅	0.99	1.00	0.99	∅	∅	1.00	633.00
028	∅	∅	∅	0.95	1.00	0.94	∅	∅	0.95	624.00
029	∅	∅	∅	1.00	0.95	0.98	∅	∅	0.97	637.00
total	0.00	0.00	0.00	28.76	29.93	27.47	0.00	0.00	28.57	



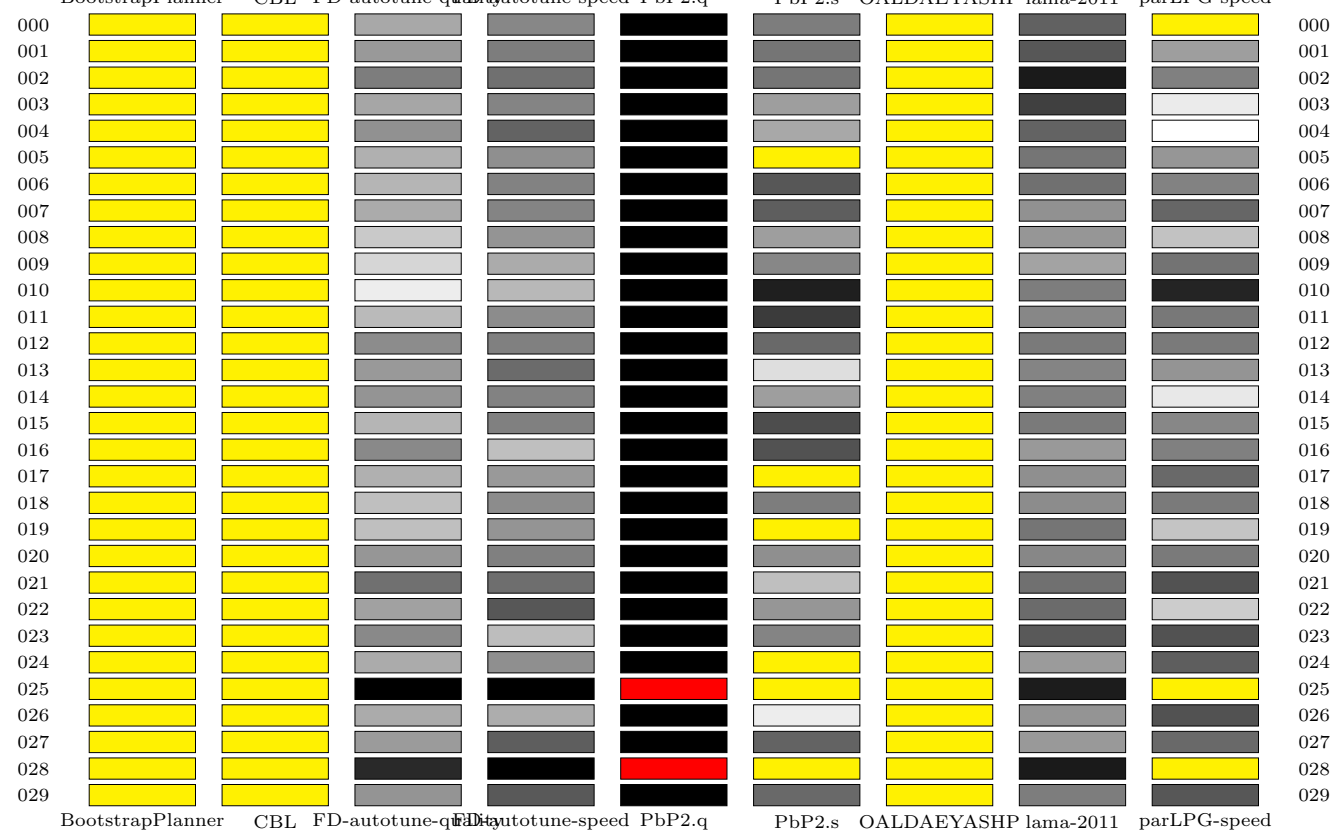
Quality with DSK

no.	BootstrapPlanner	CBL	FD-autotune-quality	FD-autotune-speed	PbP2.q	PbP2.s	OALDAEYASHP	lama-2011	parLPG-speed	best
000	∅	∅	1.00	0.64	0.92	∅	∅	0.82	∅	67.00
001	∅	∅	1.00	0.64	0.78	∅	∅	0.88	∅	67.00
002	∅	∅	1.00	0.69	x	∅	∅	0.46	∅	66.00
003	∅	∅	1.00	0.65	0.73	∅	∅	0.79	∅	56.00
004	∅	∅	1.00	0.75	x	∅	∅	0.80	∅	69.00
005	∅	∅	∅	1.00	x	∅	∅	∅	∅	101.00
006	∅	∅	1.00	0.70	∅	∅	∅	∅	∅	85.00
007	∅	∅	1.00	0.78	0.94	∅	∅	∅	∅	72.00
008	∅	∅	∅	1.00	∅	∅	∅	∅	∅	125.00
009	∅	∅	1.00	0.79	0.73	∅	∅	∅	∅	84.00
010	∅	∅	∅	1.00	∅	∅	∅	∅	∅	133.00
011	∅	∅	1.00	0.70	∅	∅	∅	∅	∅	89.00
012	∅	∅	∅	1.00	∅	∅	∅	∅	∅	121.00
013	∅	∅	∅	1.00	∅	∅	∅	∅	∅	114.00
014	∅	∅	∅	1.00	∅	∅	∅	∅	∅	145.00
015	∅	∅	∅	1.00	∅	∅	∅	∅	∅	153.00
016	∅	∅	∅	1.00	∅	∅	∅	∅	∅	157.00
017	∅	∅	∅	1.00	∅	∅	∅	∅	∅	136.00
018	∅	∅	∅	1.00	∅	∅	∅	∅	∅	150.00
019	∅	∅	∅	1.00	∅	∅	∅	∅	∅	155.00
020	∅	∅	∅	∅	∅	∅	∅	∅	∅	∅
021	∅	∅	∅	∅	∅	∅	∅	∅	∅	∅
022	∅	∅	∅	∅	∅	∅	∅	∅	∅	∅
023	∅	∅	∅	∅	∅	∅	∅	∅	∅	∅
024	∅	∅	∅	∅	∅	∅	∅	∅	∅	∅
025	∅	∅	∅	∅	∅	∅	∅	∅	∅	∅
026	∅	∅	∅	∅	∅	∅	∅	∅	∅	∅
027	∅	∅	∅	∅	∅	∅	∅	∅	∅	∅
028	∅	∅	∅	∅	∅	∅	∅	∅	∅	∅
029	∅	∅	∅	∅	∅	∅	∅	∅	∅	∅
total	0.00	0.00	9.00	17.34	4.09	0.00	0.00	3.75	0.00	

	BootstrapPlanner	CBL	FD-autotune-qual	FD-autotune-speed	PbP2.q	PbP2.s	OALDAEYASHP	lama-2011	parLPG-speed	
000	Yellow	Yellow	Black	Grey	Dark Grey	Yellow	Yellow	Dark Grey	Yellow	000
001	Yellow	Yellow	Black	Grey	Dark Grey	Yellow	Yellow	Dark Grey	Yellow	001
002	Yellow	Yellow	Black	Grey	Red	Yellow	Yellow	White	Yellow	002
003	Yellow	Yellow	Black	Grey	Dark Grey	Yellow	Yellow	Dark Grey	Yellow	003
004	Yellow	Yellow	Black	Grey	Dark Grey	Yellow	Yellow	Dark Grey	Yellow	004
005	Yellow	Yellow	Yellow	Black	Red	Yellow	Yellow	Yellow	Yellow	005
006	Yellow	Yellow	Black	Grey	Yellow	Yellow	Yellow	Yellow	Yellow	006
007	Yellow	Yellow	Black	Dark Grey	Black	Yellow	Yellow	Yellow	Yellow	007
008	Yellow	Yellow	Yellow	Black	Yellow	Yellow	Yellow	Yellow	Yellow	008
009	Yellow	Yellow	Black	Dark Grey	Grey	Yellow	Yellow	Yellow	Yellow	009
010	Yellow	Yellow	Yellow	Black	Yellow	Yellow	Yellow	Yellow	Yellow	010
011	Yellow	Yellow	Black	Grey	Yellow	Yellow	Yellow	Yellow	Yellow	011
012	Yellow	Yellow	Yellow	Black	Yellow	Yellow	Yellow	Yellow	Yellow	012
013	Yellow	Yellow	Yellow	Black	Yellow	Yellow	Yellow	Yellow	Yellow	013
014	Yellow	Yellow	Yellow	Black	Yellow	Yellow	Yellow	Yellow	Yellow	014
015	Yellow	Yellow	Yellow	Black	Yellow	Yellow	Yellow	Yellow	Yellow	015
016	Yellow	Yellow	Yellow	Black	Yellow	Yellow	Yellow	Yellow	Yellow	016
017	Yellow	Yellow	Yellow	Black	Yellow	Yellow	Yellow	Yellow	Yellow	017
018	Yellow	Yellow	Yellow	Black	Yellow	Yellow	Yellow	Yellow	Yellow	018
019	Yellow	Yellow	Yellow	Black	Yellow	Yellow	Yellow	Yellow	Yellow	019
020	Yellow	Yellow	Yellow	Yellow	Yellow	Yellow	Yellow	Yellow	Yellow	020
021	Yellow	Yellow	Yellow	Yellow	Yellow	Yellow	Yellow	Yellow	Yellow	021
022	Yellow	Yellow	Yellow	Yellow	Yellow	Yellow	Yellow	Yellow	Yellow	022
023	Yellow	Yellow	Yellow	Yellow	Yellow	Yellow	Yellow	Yellow	Yellow	023
024	Yellow	Yellow	Yellow	Yellow	Yellow	Yellow	Yellow	Yellow	Yellow	024
025	Yellow	Yellow	Yellow	Yellow	Yellow	Yellow	Yellow	Yellow	Yellow	025
026	Yellow	Yellow	Yellow	Yellow	Yellow	Yellow	Yellow	Yellow	Yellow	026
027	Yellow	Yellow	Yellow	Yellow	Yellow	Yellow	Yellow	Yellow	Yellow	027
028	Yellow	Yellow	Yellow	Yellow	Yellow	Yellow	Yellow	Yellow	Yellow	028
029	Yellow	Yellow	Yellow	Yellow	Yellow	Yellow	Yellow	Yellow	Yellow	029

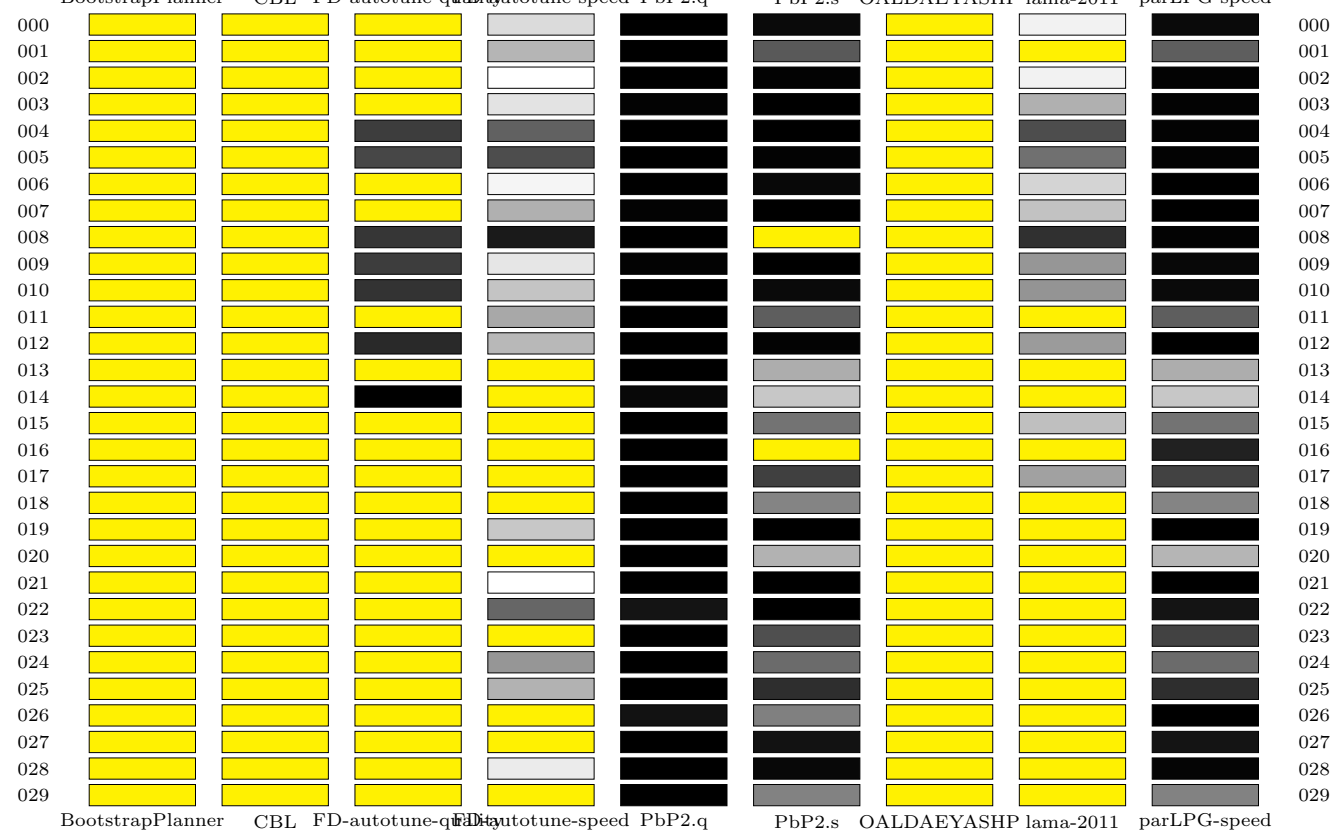
Quality with DSK

no.	BootstrapPlanner	CBL	FD-autotune-quality	FD-autotune-speed	PbP2.q	PbP2.s	OALDAEYASHP	lama-2011	parLPG-speed	best
000	∅	∅	0.74	0.79	1.00	0.81	∅	0.85	∅	496.00
001	∅	∅	0.77	0.81	1.00	0.82	∅	0.87	0.76	459.00
002	∅	∅	0.81	0.83	1.00	0.82	∅	0.96	0.80	384.00
003	∅	∅	0.74	0.80	1.00	0.76	∅	0.90	0.64	645.00
004	∅	∅	0.78	0.85	1.00	0.74	∅	0.85	0.61	541.00
005	∅	∅	0.73	0.78	1.00	∅	∅	0.82	0.77	562.00
006	∅	∅	0.72	0.80	1.00	0.87	∅	0.83	0.80	453.00
007	∅	∅	0.74	0.80	1.00	0.85	∅	0.78	0.84	480.00
008	∅	∅	0.69	0.77	1.00	0.76	∅	0.77	0.70	584.00
009	∅	∅	0.67	0.74	1.00	0.79	∅	0.75	0.82	678.00
010	∅	∅	0.64	0.72	1.00	0.95	∅	0.81	0.94	473.00
011	∅	∅	0.71	0.78	1.00	0.91	∅	0.79	0.82	663.00
012	∅	∅	0.78	0.81	1.00	0.84	∅	0.81	0.81	401.00
013	∅	∅	0.77	0.83	1.00	0.66	∅	0.80	0.77	506.00
014	∅	∅	0.77	0.80	1.00	0.76	∅	0.81	0.64	464.00
015	∅	∅	0.72	0.80	1.00	0.88	∅	0.81	0.79	664.00
016	∅	∅	0.79	0.71	1.00	0.87	∅	0.77	0.80	624.00
017	∅	∅	0.73	0.77	1.00	∅	∅	0.78	0.84	726.00
018	∅	∅	0.71	0.79	1.00	0.81	∅	0.79	0.81	612.00
019	∅	∅	0.71	0.77	1.00	∅	∅	0.82	0.70	527.00
020	∅	∅	0.77	0.80	1.00	0.78	∅	0.79	0.81	631.00
021	∅	∅	0.83	0.83	1.00	0.71	∅	0.83	0.87	388.00
022	∅	∅	0.75	0.87	1.00	0.77	∅	0.84	0.69	644.00
023	∅	∅	0.79	0.71	1.00	0.80	∅	0.86	0.88	486.00
024	∅	∅	0.74	0.78	1.00	∅	∅	0.76	0.85	639.00
025	∅	∅	1.00	1.00	x	∅	∅	0.96	∅	575.00
026	∅	∅	0.74	0.73	1.00	0.63	∅	0.77	0.87	621.00
027	∅	∅	0.76	0.85	1.00	0.85	∅	0.76	0.84	497.00
028	∅	∅	0.94	1.00	x	∅	∅	0.96	∅	869.00
029	∅	∅	0.77	0.86	1.00	0.84	∅	0.81	0.87	865.00
total	0.00	0.00	22.78	24.18	28.00	19.28	0.00	24.69	21.36	



Quality with DSK

no.	Bootstrap	Planner	CBL	FD-autotune-quality	FD-autotune-speed	PbP2.q	PbP2.s	OALDAEYASHP	lama-2011	parLPG-speed	best
000	∅	∅	∅	∅	0.79	1.00	0.99	∅	0.77	0.99	648.00
001	∅	∅	∅	∅	0.82	1.00	0.91	∅	∅	0.91	726.00
002	∅	∅	∅	∅	0.75	1.00	1.00	∅	0.77	1.00	688.00
003	∅	∅	∅	∅	0.78	1.00	1.00	∅	0.83	1.00	633.00
004	∅	∅	∅	0.94	0.91	1.00	1.00	∅	0.93	1.00	630.00
005	∅	∅	∅	0.93	0.93	1.00	1.00	∅	0.89	1.00	626.00
006	∅	∅	∅	∅	0.76	1.00	0.99	∅	0.79	1.00	595.00
007	∅	∅	∅	∅	0.83	1.00	1.00	∅	0.81	1.00	565.00
008	∅	∅	∅	0.95	0.98	1.00	∅	∅	0.95	1.00	596.00
009	∅	∅	∅	0.94	0.78	1.00	1.00	∅	0.85	0.99	701.00
010	∅	∅	∅	0.95	0.81	1.00	0.99	∅	0.86	0.99	682.00
011	∅	∅	∅	∅	0.84	1.00	0.91	∅	∅	0.91	868.00
012	∅	∅	∅	0.96	0.82	1.00	1.00	∅	0.85	1.00	704.00
013	∅	∅	∅	∅	∅	1.00	0.83	∅	∅	0.83	683.00
014	∅	∅	∅	1.00	∅	0.99	0.81	∅	∅	0.81	527.00
015	∅	∅	∅	∅	∅	1.00	0.89	∅	0.81	0.89	935.00
016	∅	∅	∅	∅	∅	1.00	∅	∅	∅	0.97	894.00
017	∅	∅	∅	∅	∅	1.00	0.94	∅	0.85	0.94	807.00
018	∅	∅	∅	∅	∅	1.00	0.87	∅	∅	0.87	855.00
019	∅	∅	∅	∅	0.81	1.00	1.00	∅	∅	1.00	726.00
020	∅	∅	∅	∅	∅	1.00	0.83	∅	∅	0.83	841.00
021	∅	∅	∅	∅	0.75	1.00	1.00	∅	∅	1.00	865.00
022	∅	∅	∅	∅	0.90	0.98	1.00	∅	∅	0.98	833.00
023	∅	∅	∅	∅	∅	1.00	0.92	∅	∅	0.93	988.00
024	∅	∅	∅	∅	0.85	1.00	0.90	∅	∅	0.90	886.00
025	∅	∅	∅	∅	0.83	1.00	0.96	∅	∅	0.96	1028.00
026	∅	∅	∅	∅	∅	0.98	0.88	∅	∅	1.00	1049.00
027	∅	∅	∅	∅	∅	1.00	0.98	∅	∅	0.98	1138.00
028	∅	∅	∅	∅	0.77	1.00	0.99	∅	∅	0.99	906.00
029	∅	∅	∅	∅	∅	1.00	0.88	∅	∅	0.88	938.00
total	0.00	0.00	6.67	15.72	29.95	26.46	0.00	10.96	28.52		

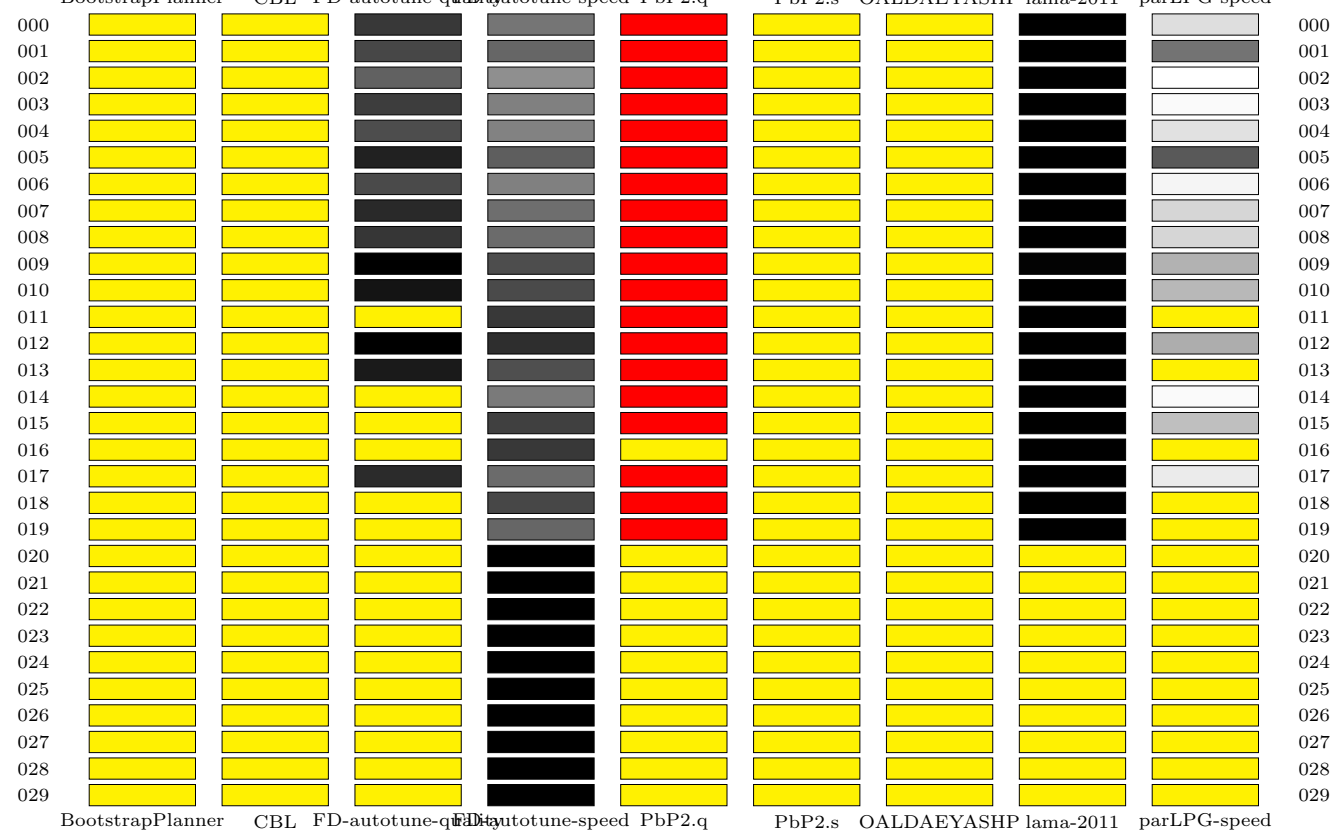


Quality with DSK

no.	BootstrapPlanner	CBL	FD-autotune-quality	FD-autotune-speed	PbP2.q	PbP2.s	OALDAEYASHP	lama-2011	parLPG-speed	best
000	∅	∅	∅	∅	1.00	1.00	∅	∅	1.00	251.00
001	∅	∅	∅	∅	1.00	1.00	∅	∅	1.00	251.00
002	∅	∅	∅	∅	1.00	1.00	∅	∅	1.00	251.00
003	∅	∅	∅	∅	1.00	1.00	∅	∅	1.00	251.00
004	∅	∅	∅	∅	1.00	1.00	∅	∅	1.00	251.00
005	∅	∅	∅	∅	1.00	1.00	∅	∅	1.00	281.00
006	∅	∅	∅	∅	1.00	1.00	∅	∅	1.00	281.00
007	∅	∅	∅	∅	1.00	1.00	∅	∅	1.00	281.00
008	∅	∅	∅	∅	1.00	1.00	∅	∅	1.00	281.00
009	∅	∅	∅	∅	1.00	1.00	∅	∅	1.00	281.00
010	∅	∅	∅	∅	1.00	1.00	∅	∅	1.00	311.00
011	∅	∅	∅	∅	1.00	1.00	∅	∅	1.00	311.00
012	∅	∅	∅	∅	1.00	1.00	∅	∅	1.00	311.00
013	∅	∅	∅	∅	1.00	1.00	∅	∅	1.00	311.00
014	∅	∅	∅	∅	1.00	1.00	∅	∅	1.00	311.00
015	∅	∅	∅	∅	1.00	1.00	∅	∅	1.00	341.00
016	∅	∅	∅	∅	1.00	1.00	∅	∅	1.00	341.00
017	∅	∅	∅	∅	1.00	1.00	∅	∅	1.00	341.00
018	∅	∅	∅	∅	1.00	1.00	∅	∅	1.00	341.00
019	∅	∅	∅	∅	1.00	1.00	∅	∅	1.00	341.00
020	∅	∅	∅	∅	1.00	1.00	∅	∅	1.00	371.00
021	∅	∅	∅	∅	1.00	1.00	∅	∅	1.00	371.00
022	∅	∅	∅	∅	1.00	1.00	∅	∅	1.00	371.00
023	∅	∅	∅	∅	1.00	1.00	∅	∅	1.00	371.00
024	∅	∅	∅	∅	1.00	1.00	∅	∅	1.00	371.00
025	∅	∅	∅	∅	1.00	1.00	∅	∅	1.00	401.00
026	∅	∅	∅	∅	1.00	1.00	∅	∅	1.00	401.00
027	∅	∅	∅	∅	1.00	1.00	∅	∅	1.00	401.00
028	∅	∅	∅	∅	1.00	1.00	∅	∅	1.00	401.00
029	∅	∅	∅	∅	1.00	1.00	∅	∅	1.00	401.00
total	0.00	0.00	0.00	0.00	30.00	30.00	0.00	0.00	30.00	

Quality with DSK

no.	Bootstrap	Planner	CBL	FD-autotune-quality	FD-autotune-speed	PbP2.q	PbP2.s	OALDAEYASHP	lama-2011	parLPG-speed	best
000	∅	∅	0.86	0.71	x	∅	∅	∅	1.00	0.45	259.00
001	∅	∅	0.82	0.75	x	∅	∅	∅	1.00	0.71	275.00
002	∅	∅	0.76	0.64	x	∅	∅	∅	1.00	0.37	302.00
003	∅	∅	0.85	0.68	x	∅	∅	∅	1.00	0.38	264.00
004	∅	∅	0.81	0.68	x	∅	∅	∅	1.00	0.44	301.00
005	∅	∅	0.92	0.77	x	∅	∅	∅	1.00	0.78	402.00
006	∅	∅	0.82	0.68	x	∅	∅	∅	1.00	0.39	318.00
007	∅	∅	0.90	0.72	x	∅	∅	∅	1.00	0.47	315.00
008	∅	∅	0.87	0.73	x	∅	∅	∅	1.00	0.46	415.00
009	∅	∅	1.00	0.81	x	∅	∅	∅	0.99	0.55	436.00
010	∅	∅	0.95	0.81	x	∅	∅	∅	1.00	0.54	396.00
011	∅	∅	∅	0.86	x	∅	∅	∅	1.00	∅	523.00
012	∅	∅	1.00	0.88	x	∅	∅	∅	1.00	0.57	428.00
013	∅	∅	0.93	0.81	x	∅	∅	∅	1.00	∅	428.00
014	∅	∅	∅	0.69	x	∅	∅	∅	1.00	0.38	361.00
015	∅	∅	∅	0.84	x	∅	∅	∅	1.00	0.52	526.00
016	∅	∅	∅	0.86	∅	∅	∅	∅	1.00	∅	635.00
017	∅	∅	0.89	0.73	x	∅	∅	∅	1.00	0.42	434.00
018	∅	∅	∅	0.82	x	∅	∅	∅	1.00	∅	626.00
019	∅	∅	∅	0.75	x	∅	∅	∅	1.00	∅	563.00
020	∅	∅	∅	1.00	∅	∅	∅	∅	∅	∅	848.00
021	∅	∅	∅	1.00	∅	∅	∅	∅	∅	∅	781.00
022	∅	∅	∅	1.00	∅	∅	∅	∅	∅	∅	875.00
023	∅	∅	∅	1.00	∅	∅	∅	∅	∅	∅	954.00
024	∅	∅	∅	1.00	∅	∅	∅	∅	∅	∅	889.00
025	∅	∅	∅	1.00	∅	∅	∅	∅	∅	∅	1030.00
026	∅	∅	∅	1.00	∅	∅	∅	∅	∅	∅	962.00
027	∅	∅	∅	1.00	∅	∅	∅	∅	∅	∅	1042.00
028	∅	∅	∅	1.00	∅	∅	∅	∅	∅	∅	807.00
029	∅	∅	∅	1.00	∅	∅	∅	∅	∅	∅	855.00
total	0.00	0.00	12.38	25.24	0.00	0.00	0.00	0.00	19.99	7.42	



Quality with DSK

planner	rover	blocksworld	satellite	gripper	spanner	barman	tpp	depots	parking	total
PbP2.q	28.00	29.47	29.95	29.93	30.00	30.00	0.00	9.01	4.09	190.45
FD-autotune-speed	24.18	13.09	15.72	28.76	0.00	26.91	25.24	20.00	17.34	171.22
PbP2.s	19.28	20.91	26.46	27.47	30.00	28.36	0.00	11.53	0.00	164.01
parLPG-speed	21.36	21.50	28.52	28.57	30.00	0.00	7.42	8.31	0.00	145.69
lama-2011	24.69	21.83	10.96	0.00	0.00	1.86	19.99	0.00	3.75	83.08
FD-autotune-quality	22.78	13.16	6.67	0.00	0.00	0.00	12.38	0.00	9.00	63.99
BootstrapPlanner	0.00	10.83	0.00	0.00	0.00	0.00	0.00	0.00	0.00	10.83
OALDAEYASHP	0.00	3.75	0.00	0.00	0.00	0.00	0.00	0.00	0.00	3.75
CBL	0.00	0.00	0.00	0.00	0.00	0.00	0.00	0.00	0.00	0.00
total	140.29	134.54	118.28	114.72	90.00	87.13	65.03	48.85	34.18	

